

男女壽賀箋

上

夫春組と六組の仇名也 曲御の馬總と百番はり
 一七珍々外百番と稱次身ハシタハ濁り濁り
 シテとは玉露骨乃誰れを嘗及口キハ陰水湧出る如き
 を云ハサシとを接指潮の渚干し等々或はきれハ世
 中乃人情みも下懸の活と喜ぶものも前音多し
 下り其彼陰門の悪と目つヤアハウエスウレ掛夜も
 う虎を捲くも腰の大胴小鞆乃キガニ甜くう
 横笛ははれ樂その恋乃道誰久あ統を觀せざん
 まるよん春れ朝より母恋よ生は持多りては

生あるりの老若煩悩おろし其意人も品
 多く新造の年増あつて増のれは山姥も有内
 義ハハ御定るは建昭乃色く多と名は是也
 可也の産一癖てハおぼくあがりさかすさうく
 多し目元さつりささり指入形は二番腰を
 踏せは色女男志のむし入るは
 形お

喜路よん
 然嬌の女のま
 心かへ来は

幾寸堂閑志述



擬
 卷
 中
 目
 録
 歌

細
 くのり
 福さあか
 女まあは
 河よあ中と
 みあ
 ちうくよひ

元服 多ぬむむたの答次経緯乃
 曾我 いし〜も判せらるの式

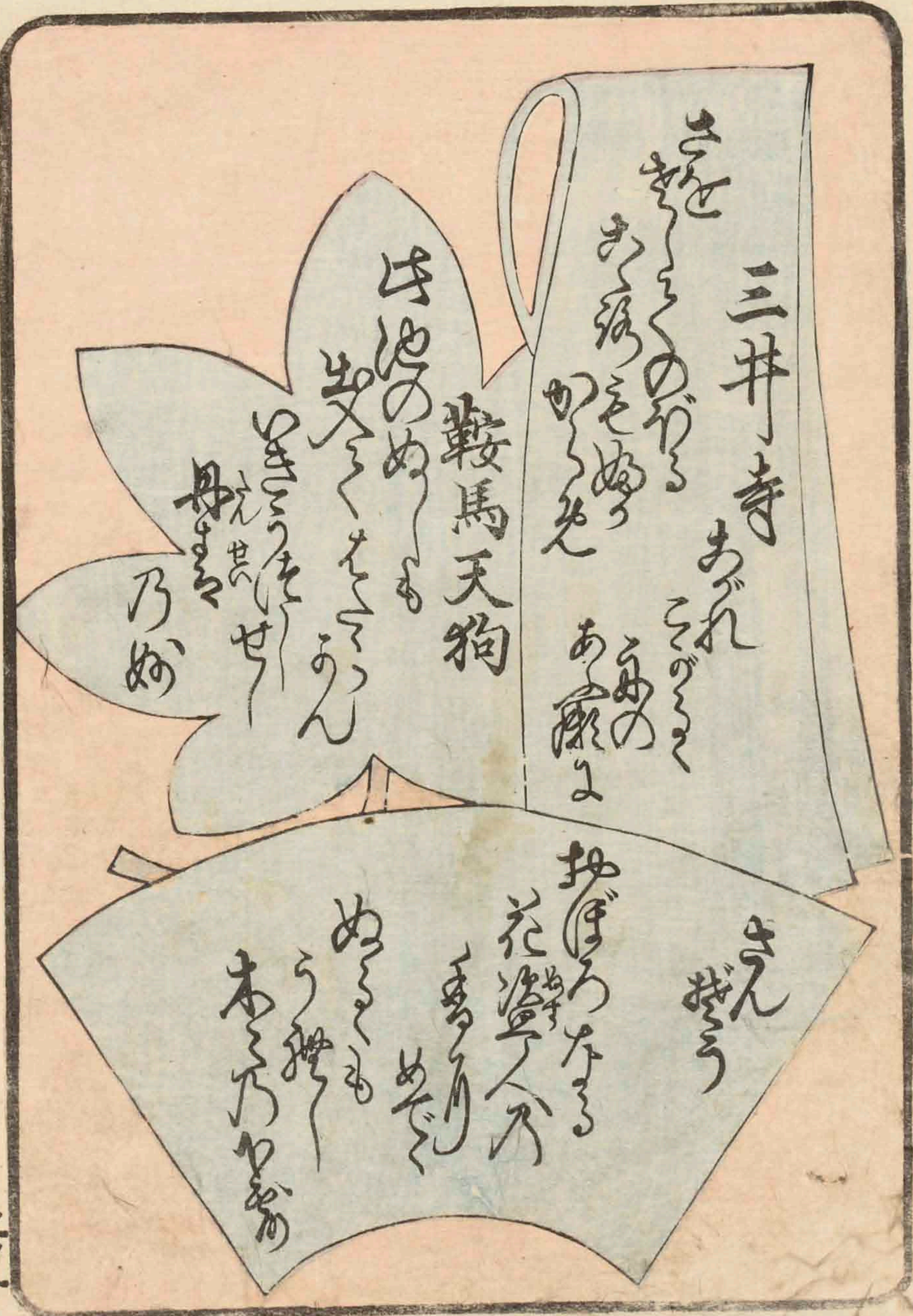


法入をひく

ゆきうらむ

酒宴可也

酒宴可也



三井寺

あづれ

あまの

あまの

あまの

鞍馬天狗

は池のぬも

あまの

あまの

あまの

あまの

あまの

あまの

あまの

あまの

あまの

あまの

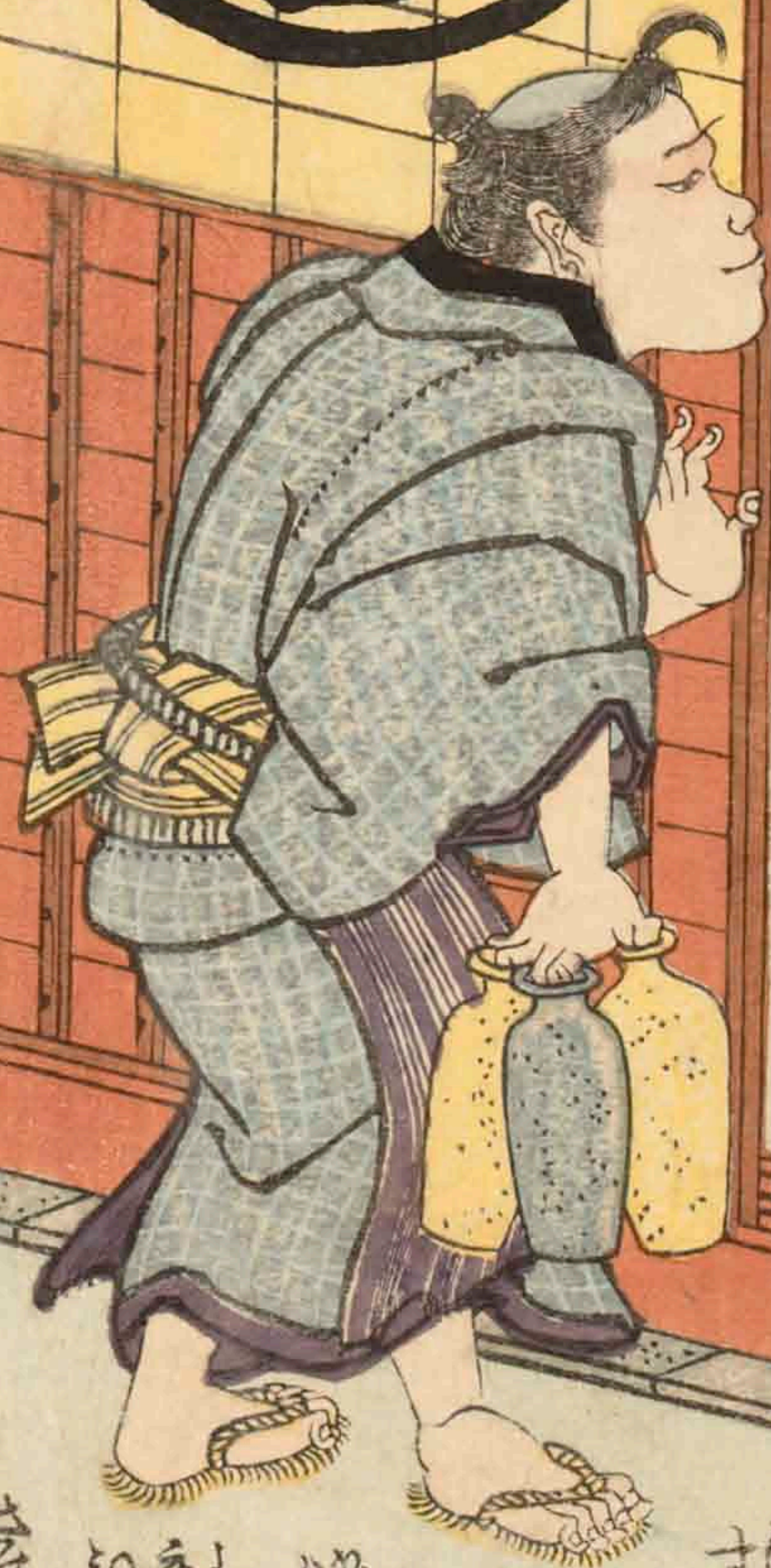


平牛人書



楽

楽



Handwritten notes at the bottom of the illustration, including the characters '楽' and '真睦'.

○戯ううちの真睦

Main column of handwritten Japanese text, likely a play script or a story, with various characters and annotations.

Handwritten text in a cursive script, likely a historical document or manuscript. The text is written in a dark ink on aged paper and is organized into two columns. The script is highly stylized and difficult to decipher without specialized knowledge of the language. The document contains several lines of text, with some words or phrases appearing to be repeated or written in a specific format. There are some small annotations or markings above certain lines of text, possibly indicating corrections or specific points of interest. The overall appearance is that of a well-preserved but challenging-to-read historical record.

夢の方向に漕ぎかゝるに似たりとて、
その心は、
漕ぎかゝるに似たりとて、

その心は、
漕ぎかゝるに似たりとて、

その心は、
漕ぎかゝるに似たりとて、

その心は、
漕ぎかゝるに似たりとて、

その心は、
漕ぎかゝるに似たりとて、

その心は、
漕ぎかゝるに似たりとて、

その心は、
漕ぎかゝるに似たりとて、

その心は、
漕ぎかゝるに似たりとて、

その心は、
漕ぎかゝるに似たりとて、

その心は、
漕ぎかゝるに似たりとて、

その心は、
漕ぎかゝるに似たりとて、

その心は、
漕ぎかゝるに似たりとて、

その心は、
漕ぎかゝるに似たりとて、

その心は、
漕ぎかゝるに似たりとて、

その心は、
漕ぎかゝるに似たりとて、

その心は、
漕ぎかゝるに似たりとて、

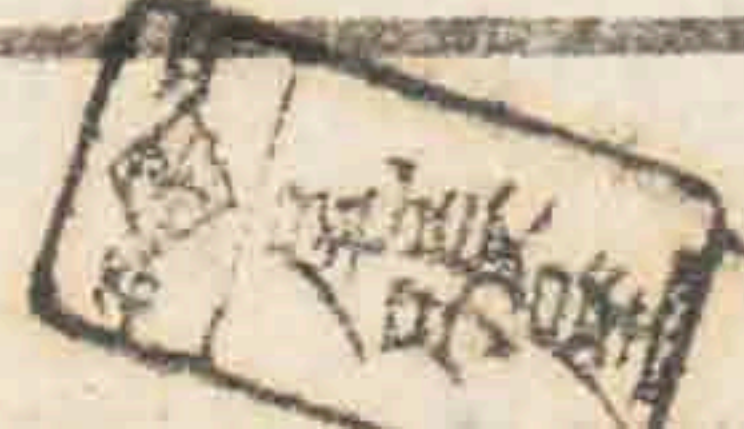
その心は、
漕ぎかゝるに似たりとて、

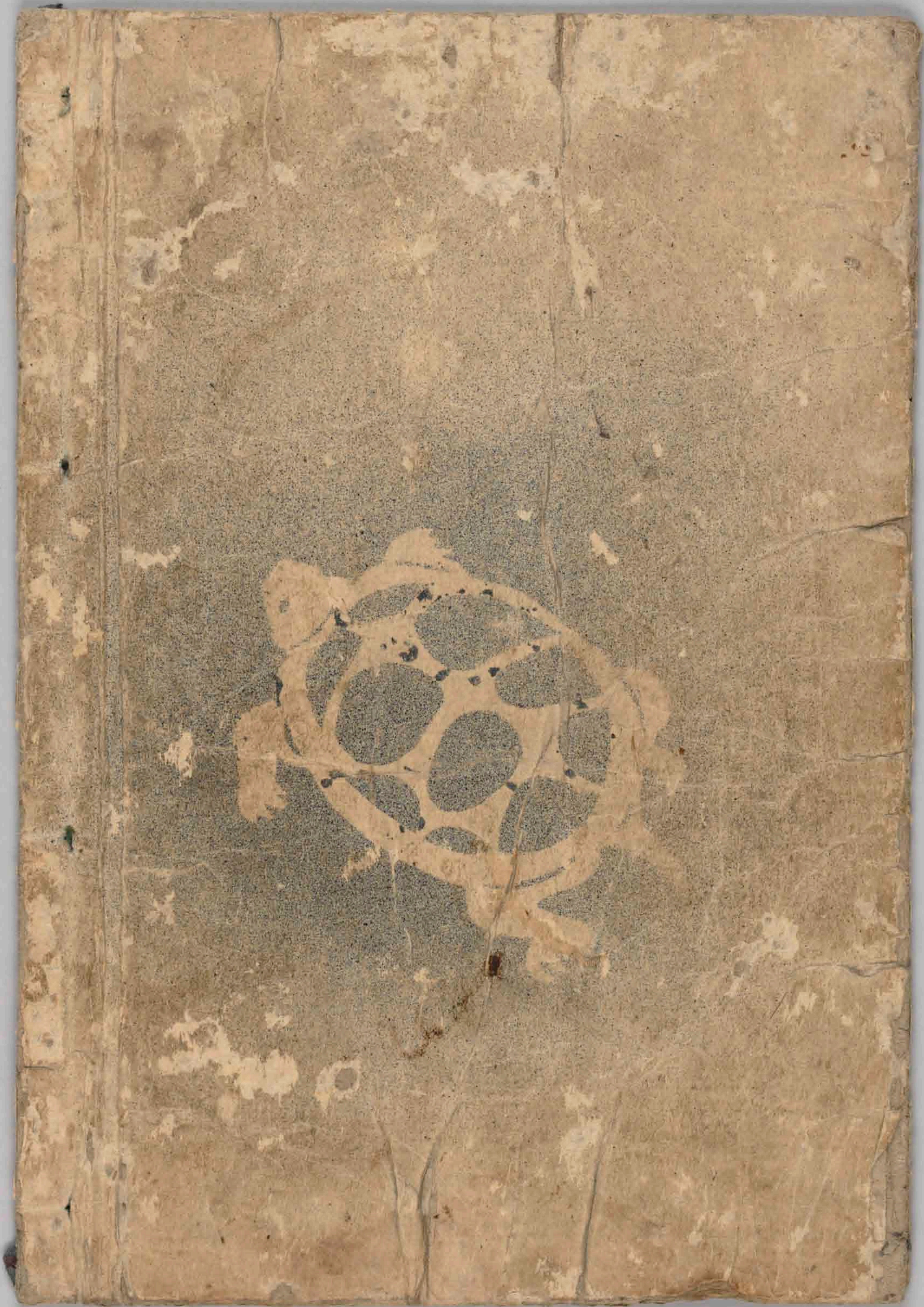
その心は、
漕ぎかゝるに似たりとて、

その心は、
漕ぎかゝるに似たりとて、

Handwritten text in a cursive script, likely a historical document or manuscript. The text is arranged in approximately 12 horizontal lines. It contains various characters, including what appears to be a mix of Latin and possibly Arabic or Persian script. Some characters are written in a larger, more decorative style, while others are smaller and more utilitarian. There are several small, illegible markings or symbols interspersed throughout the text.

Handwritten characters, possibly a date or a reference number, located at the bottom left of the page.





男女壽賀多

中



右 近 今有と知りての出来迄乃乃
こみちへよきて何事かある

鉢之木

人目さへる元

久々

好む雲の

海の掛りしも

あつてく
う積炎

皿 焼

三味線の

たしとも

あなま

あまら

ひきね

こつら

悪乃務

古坊

あやうきもの
いづれか
りつと
同く
あやうきもの
いづれか
りつと
同く



あやうきもの
いづれか
りつと
同く
あやうきもの
いづれか
りつと
同く



放下僧

あやうきもの
いづれか
りつと
同く
あやうきもの
いづれか
りつと
同く

あやうきもの
いづれか
りつと
同く
あやうきもの
いづれか
りつと
同く

Handwritten text in a cursive script, likely a historical document or manuscript. The text is written in a dark ink on aged paper and is organized into two columns. The right column contains approximately 12 lines of text, while the left column contains approximately 14 lines. The script is highly stylized and difficult to decipher without a key. There are several small annotations and markings above and below the main lines of text, including what appear to be numbers (e.g., 11, 12, 13, 14, 15, 16, 17, 18, 19, 20, 21, 22, 23, 24, 25, 26, 27, 28, 29, 30, 31, 32, 33, 34, 35, 36, 37, 38, 39, 40, 41, 42, 43, 44, 45, 46, 47, 48, 49, 50) and other symbols. The text appears to be a list or a series of entries, possibly related to a historical record or a collection of documents. The overall appearance is that of a well-preserved but somewhat faded manuscript.

Handwritten text in a cursive script, likely a historical document or manuscript. The text is written in a dark ink on aged paper. It consists of several lines of text, with some words and phrases written in a larger, more prominent script. The text is arranged in a single column, reading from top to bottom. The script is highly stylized and difficult to decipher without a key or context. There are several instances of words written in a larger, bolder script, possibly indicating emphasis or specific terms. The overall appearance is that of a well-preserved but challenging-to-read historical document.



白雲山房詩集



末
廣

くさくさおとす^まくさくさおとす^ま
お梅のりくさくさおとす^ま

お梅のりくさくさおとす^ま

お梅のりくさくさおとす^ま

お梅のりくさくさおとす^ま

お梅のりくさくさおとす^ま

お梅のりくさくさおとす^ま

お梅のりくさくさおとす^ま

お梅のりくさくさおとす^ま

刀
その元を
母張^りよ^りおとす^ま
お梅のりくさくさおとす^ま
お梅のりくさくさおとす^ま

嬬アレくおつるえん
 八宝のうらもアレサ
 りのいんてんてん
 ふけのまのアルマウシ
 八アこれまづら
 あやあやあやあやあや
 子けあやあやあやあや
 大なるまをまて
 へするのんこサ
 をま
 ぬまアササ
 よしよまま
 せうのうコレサあ
 ぬるるにまのう
 ぬるもまのう
 アササ

吉のまのうらま
 うらまのうらまのう
 すのうらまのう
 かまのうらまのう
 まのうらまのう
 さうらまのう
 わのうらまのう
 よのうらまのう
 のんまのう
 うのまのう

りのまのうらま
 うらまのうらまのう
 まのうらまのう
 ぬまのうらまのう



末廣

みれ人も
 かなまけ
 あり
 扇の
 地紙
 をりくは

花月

白梅のついで
よきまも
花さくくと
今のませ
中々も
ゆくさき



ゆらん
のどく
よまて
おまろ
お入る
次をゆらん

Handwritten text in a cursive script, likely a historical document or manuscript. The text is arranged in approximately 15 horizontal lines across the page. The script is dense and characteristic of early modern European handwriting. Several lines contain small, illegible annotations or corrections written above or below the main text. The document is framed by a simple border.

Handwritten text in a cursive script, likely a form of shorthand or a specific dialect. The text is arranged in approximately 12 horizontal lines within a rectangular border. Some characters are marked with small numbers (e.g., 11, 12, 13) above them, possibly indicating syllable counts or specific phonetic values. The script is dense and fluid, characteristic of historical shorthand systems.

Handwritten text located below the main block, consisting of a few lines of cursive script. It appears to be a separate note or a signature.



