

roar!

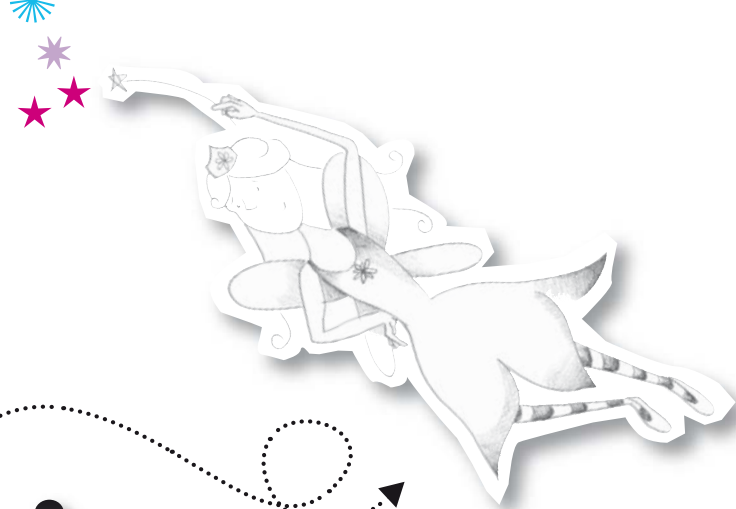
I can draw

Magical Creatures



I can draw

Magical Creatures





LONDON, NEW YORK, MUNICH,
MELBOURNE, and DELHI

DESIGNED BY Penny Lamprell &
Laura Roberts-Jensen

ILLUSTRATED BY Clare Wilson
& the Peter Bull Art Studio

WRITTEN AND EDITED BY
Carrie Love & Lorrie Mack

US EDITOR Margaret Parrish

PHOTOGRAPHY BY Andy Crawford
PUBLISHING MANAGER Susan Leonard

PRODUCTION Seyhan Esen-Yagmurlu

JACKET DESIGNER Karen Hood

DTP DESIGNER Almudena Díaz

CONSULTANT Emma Drew

First American Edition, 2006
Published in the United States by
DK Publishing, Inc., 375 Hudson Street
New York, New York 10014

06 07 08 09 10 10 9 8 7 6 5 4 3 2 1

Copyright © 2006 Dorling Kindersley
Limited

All rights reserved. No part of this
publication may be reproduced, stored in a
retrieval system, or transmitted in any form
or by any means, electronic, mechanical,
photocopying, recording, or otherwise,
without the prior written permission of the
copyright owner. Published in Great Britain
by Dorling Kindersley Limited.

A Cataloging-in-Publication record for
this book is available from the
Library of Congress.

ISBN-13 978-0-7566-1986-2
ISBN-10 0-7566-1986-6

Color reproduction by ICON,
United Kingdom
Printed and bound in Slovakia
by Tlaciarne BB S.R.O.

Discover more at
www.dk.com

Contents



Useful stuff 4

Flower fairy 6

Ballerina fairy 8



Tooth fairy 10

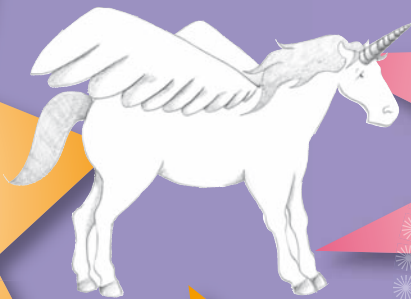
Fairy faces 12

Mermaid 14

Magical colors 16

Princess 18

Prince 20



Elf 30

Elf parade 32

Wizard 34

Expressions 36

Witch 38



Shading 22

Unicorn 24

Dragon 26

Giant 40

Texture 42

Body parts 44



More dragons 28



Scale 46

Index 48

Useful stuff

CREATE YOUR OWN MAGIC with the tools below. Bring your drawings to life with colors and shading.

Oil pastels for coloring in your drawings.

Soft pastels can create a gentle look which is good for fairies and princesses.

No. 2 pencil

4B soft pencil

charcoal

For shading effects, use an eraser or your finger to smudge soft pastels and charcoal.

colored paper

sketch pad

colored pencils

pencil sharpener

Color in a drawing with water-soluble colored pencils. Use a wet paintbrush to soften the color and make it look more like paint.

References

Stuck for ideas? Take a look around you and see what inspiration you can get from toys, magazines, and newspapers.



feathers



pictures from magazines, postcards, and books



felt-tip pen for strong color

ballpoint pen for strong outlines

toy figures and puppets for reference

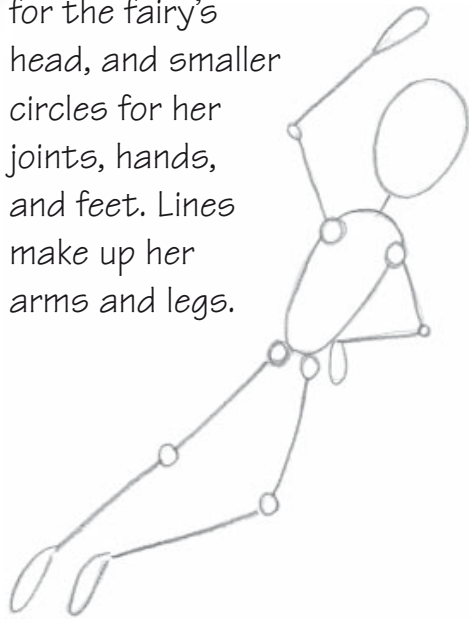


jewels





Use a large oval for the fairy's head, and smaller circles for her joints, hands, and feet. Lines make up her arms and legs.



Give the fairy wings and a wand. Draw in her hands, arms, and legs.



Flower fairy

I AM A FLOWER FAIRY, see how
I flutter my wings. I am as
pretty as a petal. I sprinkle
magical fairy dust with my wand.





Add eyes, hair, a mouth, and a nose. Decorate your fairy with a pretty dress and striped stockings.

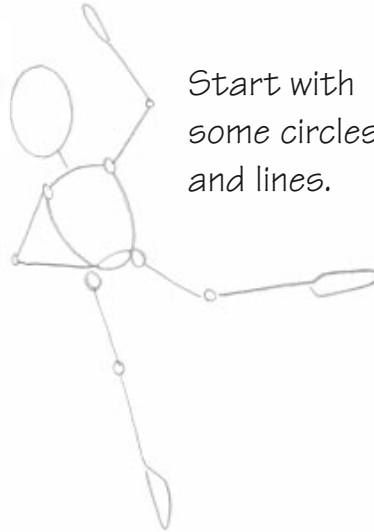


Use shading to decorate your fairy's dress.





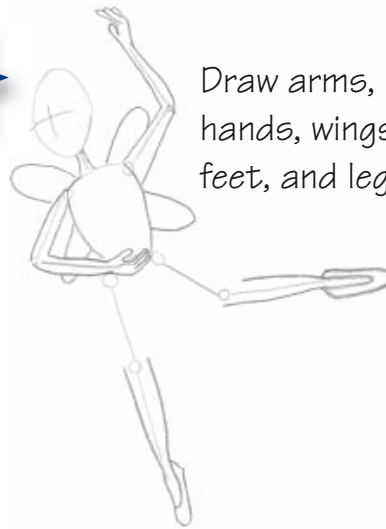
1



Start with some circles and lines.



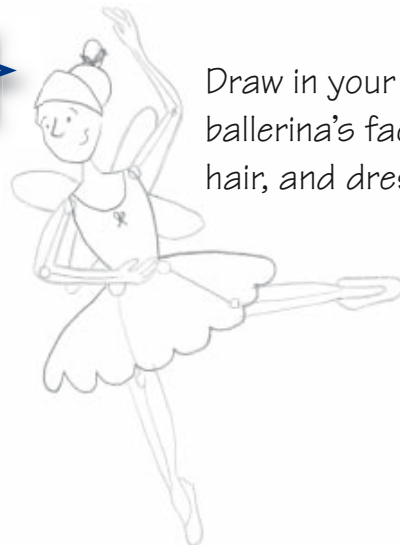
2



Draw arms, hands, wings, feet, and legs.



3



Draw in your ballerina's face, hair, and dress.



8



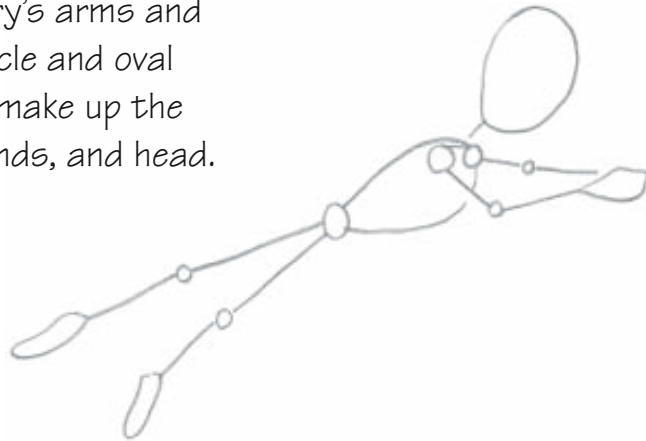
Ballerina fairy

HERE IS THE LOVELY dancing
fairy, so light on her toes.
Make her dance around your page.



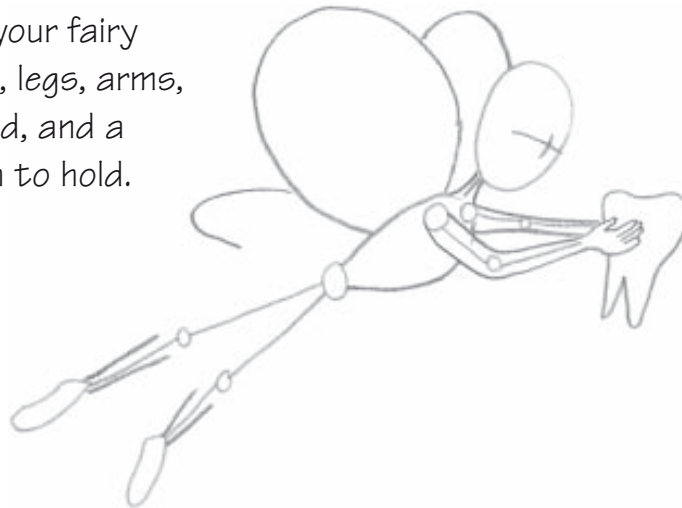
1

Use lines as the basis of your fairy's arms and legs. Circle and oval shapes make up the feet, hands, and head.



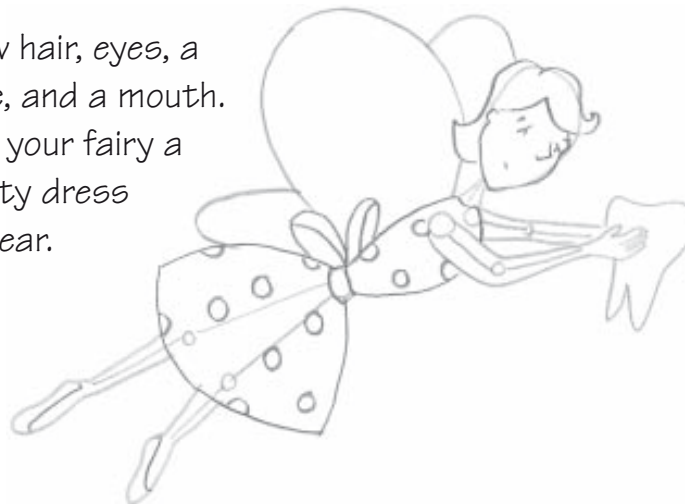
2

Give your fairy wings, legs, arms, a hand, and a tooth to hold.



3

Draw hair, eyes, a nose, and a mouth. Give your fairy a pretty dress to wear.





Use shading and stippling to decorate your fairy's hair and dress.

Tooth fairy

DREAM OF TWINKLY STARS, as your very own Tooth fairy comes to swap your tooth for some money!





Fairy faces



YOUR PENCILS, PENS, AND PASTELS are like magic wands. Use them to make your fairies look beautiful!

Try some smaller flowers for your fairy's crown.

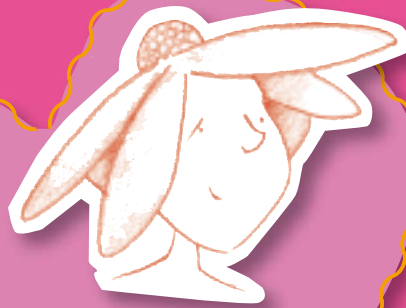


Fairy headwear

There are plenty of ways to dress up your fairies. Create amazing headwear for them to fly around in.



Here's an interesting design!



Make a pretty hat that looks like one big flower.



Fairy hairstyles

Be creative with your drawings and give your fairies some fun hairdos. You're the one with the pencil so you can decide what to try out; short and curly or long and wavy!



This fairy's hairstyle is fun and easy to draw.

Draw thick and wavy hair using curved lines and shading.



Decorate your fairy's hair with a ribbon and give her a necklace to wear.



To get this unusual hairstyle use lots of spirals in a pile on top of her head.



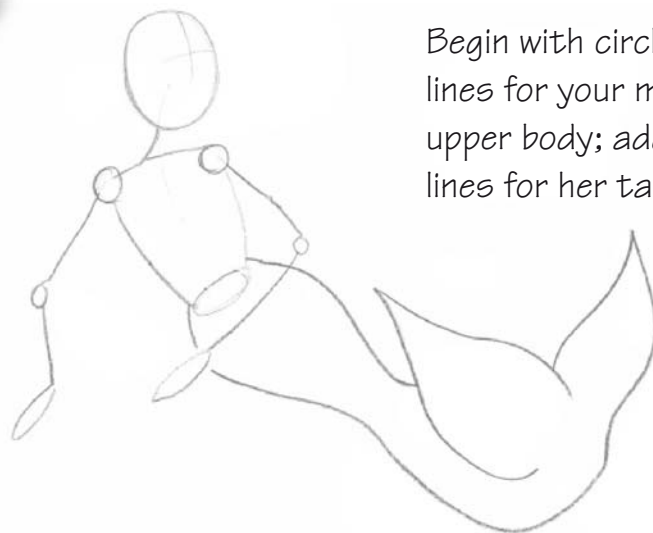
Fairytastic





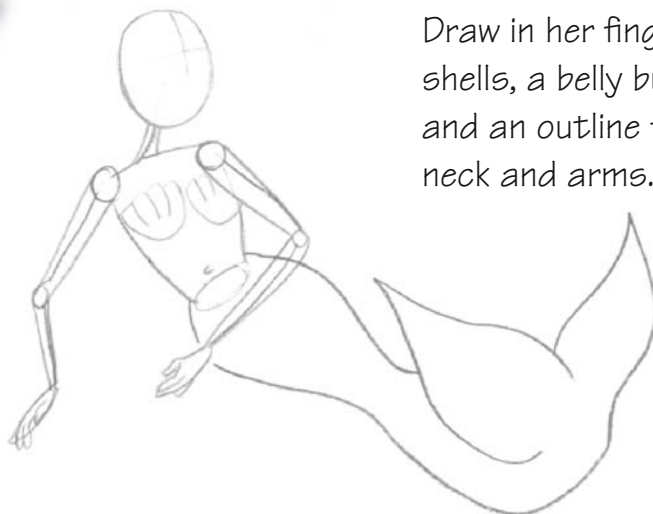
1

Begin with circles and lines for your mermaid's upper body; add curved lines for her tail.



2

Draw in her fingers, two shells, a belly button, and an outline for her neck and arms.



3

Give your mermaid eyes, hair, a mouth, and a nose. Put scales on her tail.



Mermaid

“I LOVE TO SPLASH AROUND IN THE WAVES and swim with the fish. I visit the shore every now and then, but I live in the sea since I can’t stay out of the water for too long!”



Magical colors

HAVE FUN AND GET CREATIVE when coloring in your magical creatures. See the amazing difference that pastels, water-soluble colored pencils, and felt-tip pens can make!



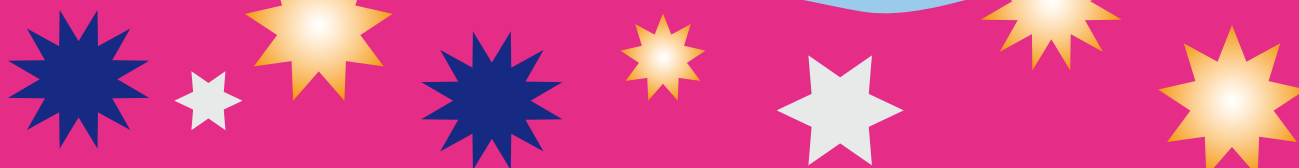
Witch

Color in your witch's hair, dress, and shoes with colored pencils. Don't make her dress a solid black; use shading to make it lighter in some areas. Create a rough texture on her hair and broomstick using oil pastels.



Wizard

Using felt-tip pens, make your wizard's cloak look like velvet. He is a wise and old wizard so keep his hair and beard white.



Flower Fairy

This flower fairy has been colored in with soft pastels. Use two colors and blend them together.

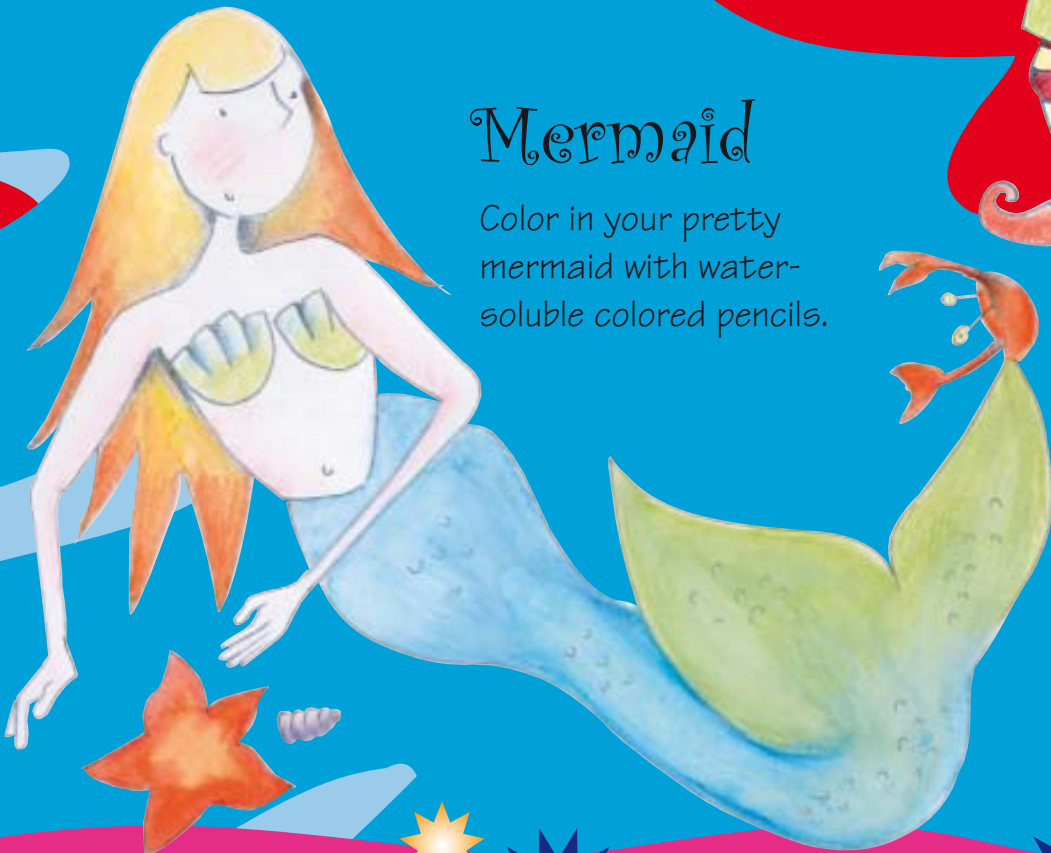


Before you get going try out some different combinations of colors and materials on the side of the page.



Mermaid

Color in your pretty mermaid with water-soluble colored pencils.



Elf

Use colored pencils to decorate your elf. Try different shades of green for his hat and shirt. Add depth to your drawing by shading his bag and scarf to make them look worn.





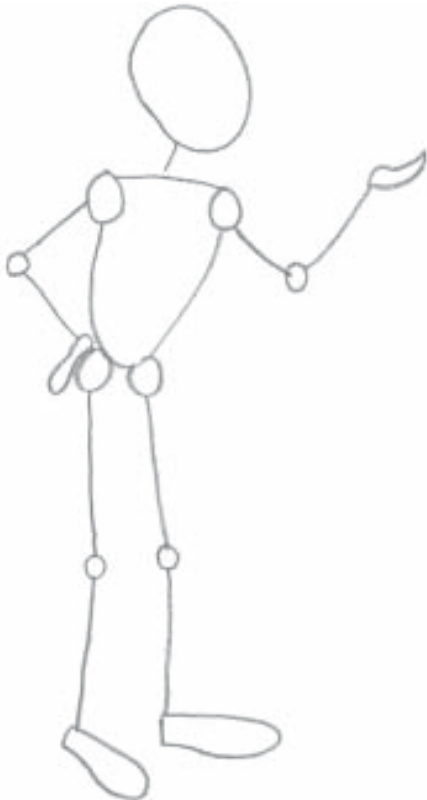
Princess

MEET THE PRETTY PRINCESS. She looks sweet in her patterned dress. She lives in a magical kingdom. If she kisses the frog he might turn into a prince!

ribbit!



1 Begin with basic shapes and lines for your drawing.



2 Make an outline for her dress, arms, neck, and shoes.



Use shading and coloring to dress up your princess!



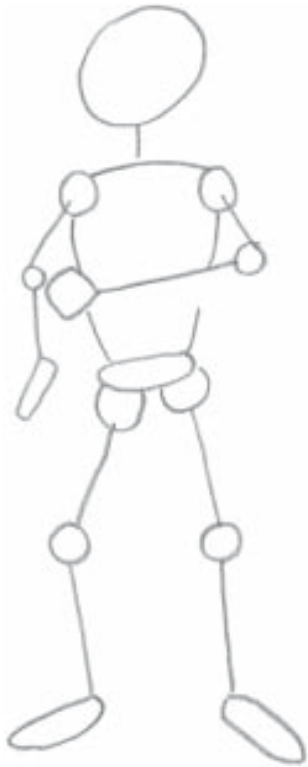
3

Draw her hair, eyes, mouth and nose. Add a crown, hearts on her dress, and a frog for her to hold.



1

Basic shapes and lines make up the main body parts for the prince.



2

Draw an outline around the prince's body. Give him a cloak and clothes.



Prince

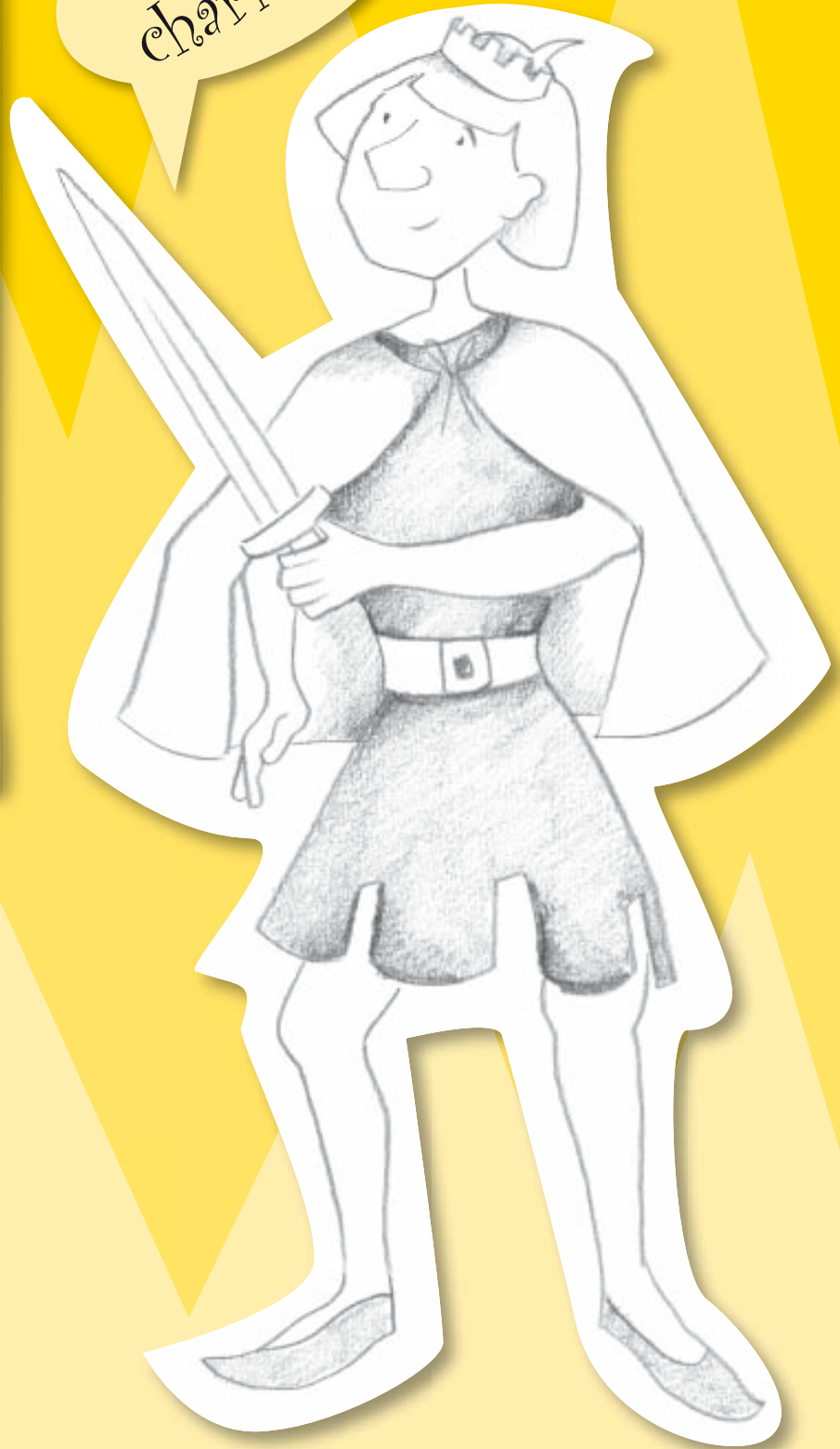
DRAW A ROYAL PRINCE who is ready to rule a kingdom, fight a dragon, and charm a princess. In order to look the part he needs a crown, a sword, and a stylish cloak.



Put hair and a crown on the prince's head. Draw in his face and give him a belt and sword.



I'm so charming!



colored pencils

Use colored pencils as well as 2B, 3B, 4B, and No. 2 pencils to build up hatching.

felt-tips

Use different shades of colored felt-tips to create strong effects.

oil pastels

soft pastel

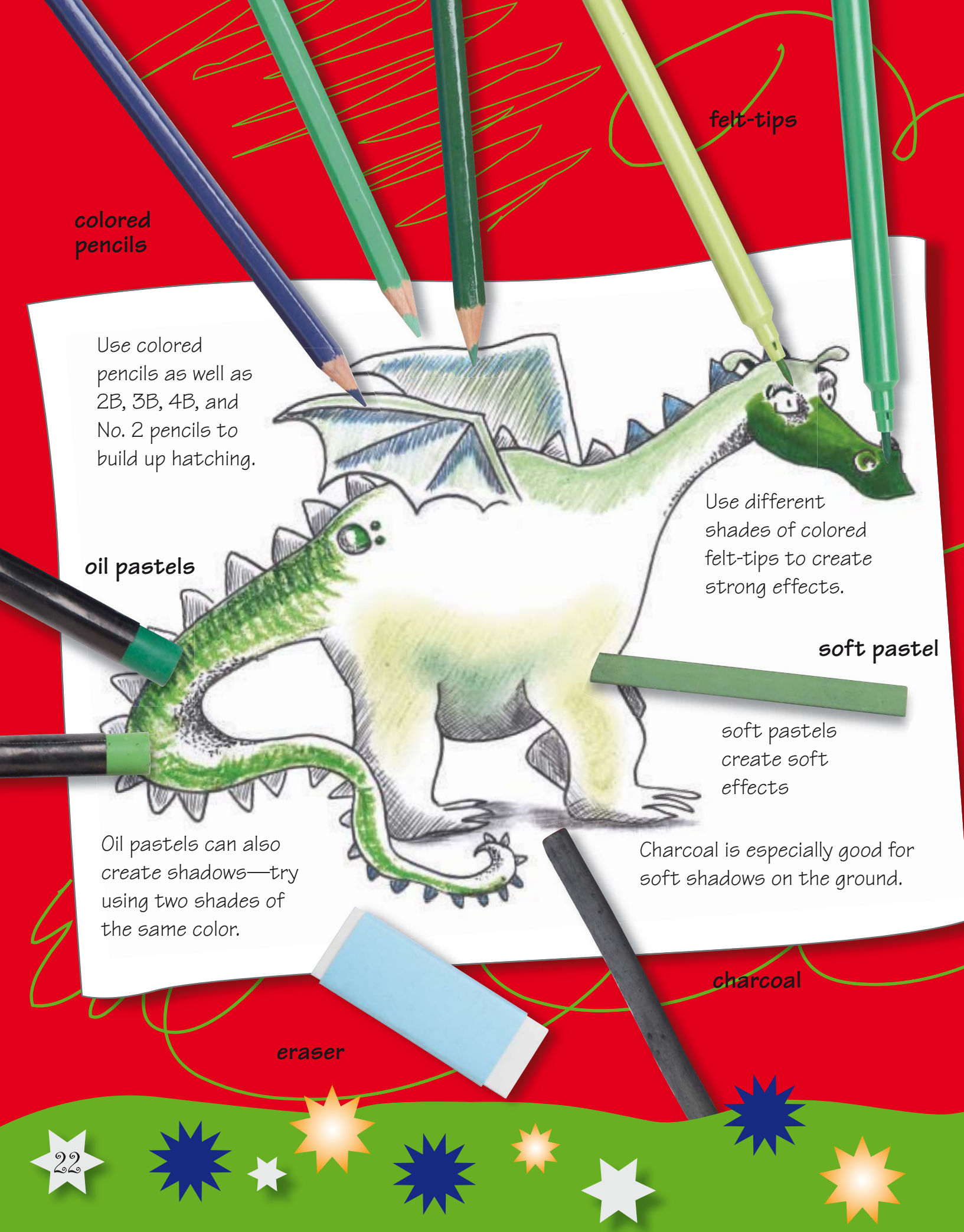
soft pastels create soft effects

Oil pastels can also create shadows—try using two shades of the same color.

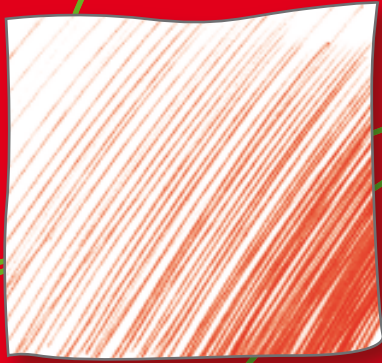
Charcoal is especially good for soft shadows on the ground.

eraser

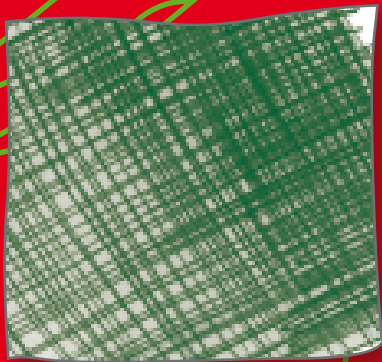
charcoal



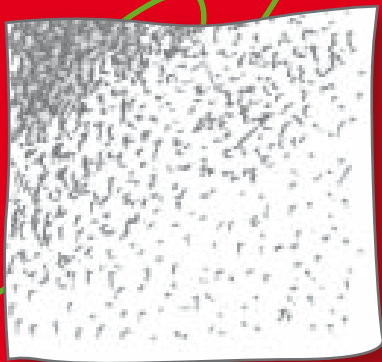
Types of shading



Soft, diagonal lines will add depth to your drawing, but make sure not to press too hard.



When crosshatching, draw lines in two directions, one over the other, pressing lightly.



In stippling, shading is created by using lots of tiny dots.

Shading

He looks a bit shady...

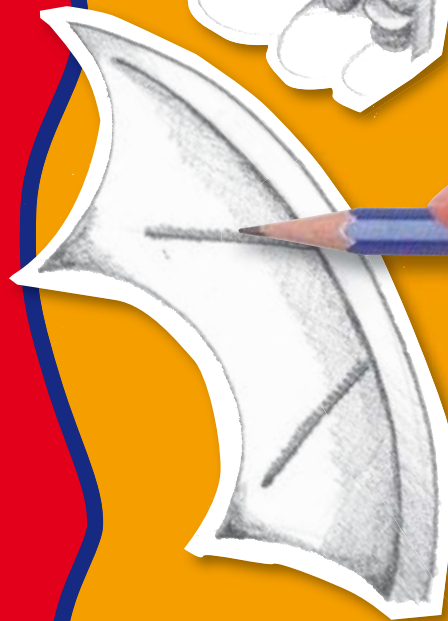


CREATE A 3-D EFFECT on your drawings with clever shading. Make your dragons and witches look more scary, and your princess and prince more important by using areas of light and dark.



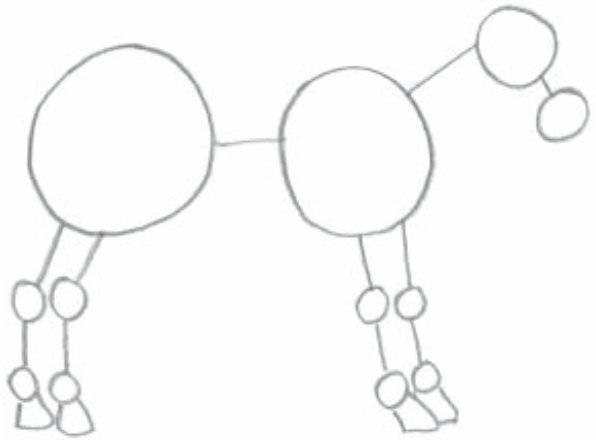
Shady wings

See how these wings have been improved with dark and light shading.



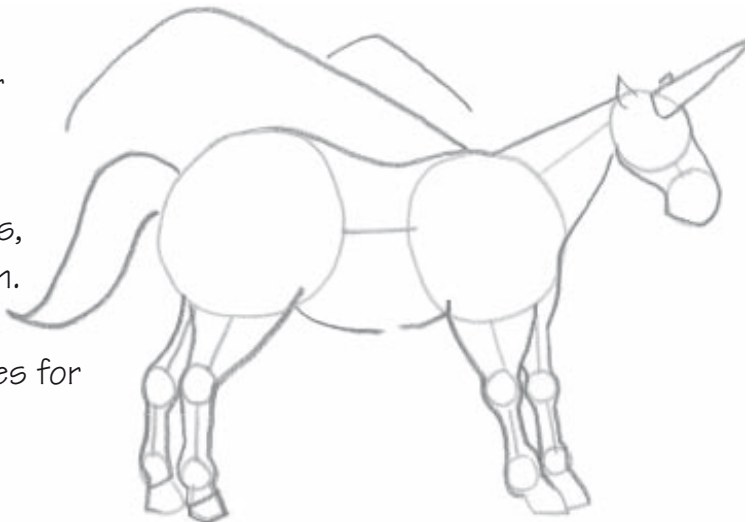
1

Start with circles in different sizes for the unicorn's head, body, and leg joints.



2

Draw an outline for the body. Give it a tail, ears, and a horn. Draw two curved lines for its wings.



3

Finish the wing with lots of curved lines in a row. Give the unicorn a mane, eyes, a mouth, and nose. Decorate its horn.



Unicorn

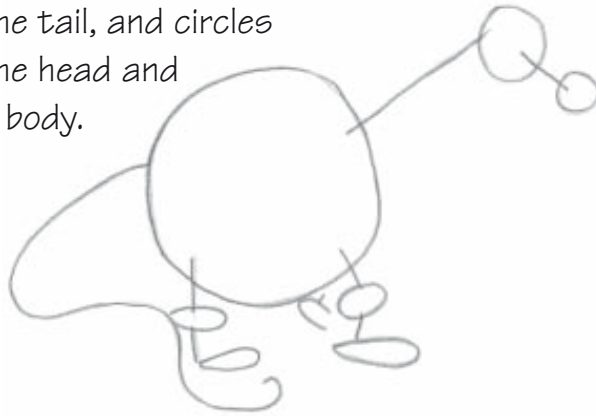
A UNICORN IS A MYTHICAL CREATURE with magical powers. It looks like a horse, but one with wings and a horn coming out of its forehead.

Use shading to make your drawing look more interesting.



1

Draw straight lines for the neck and legs, a squiggly line for the tail, and circles for the head and main body.



2

Add wings, ears, and feet. Draw around the main body outline.



3

Fill in the dragon's face. Use triangles for the ridges on his back.



Dragon

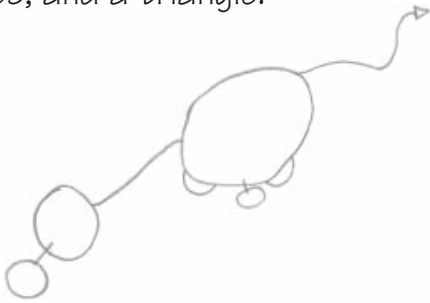
LEGENDS FROM DIFFERENT COUNTRIES describe dragons as large fire-breathing reptiles with wings. Dragons were seen as terrifying creatures that often guarded treasure or maidens.



Use shading on the dragon's body to make him look more lifelike.

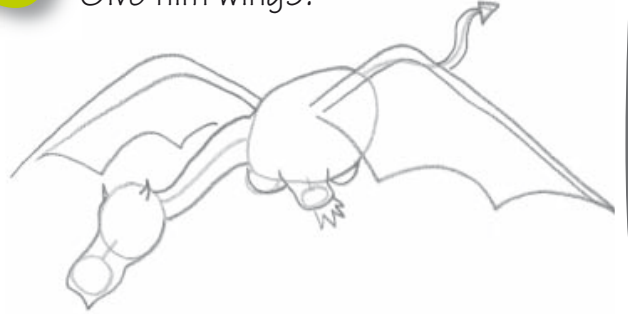
1

Draw circles, semicircles, squiggly lines, and a triangle.



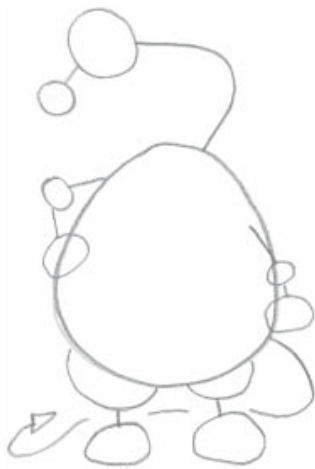
2

Create an outline around the dragon's body, head, and tail. Give him wings!



1

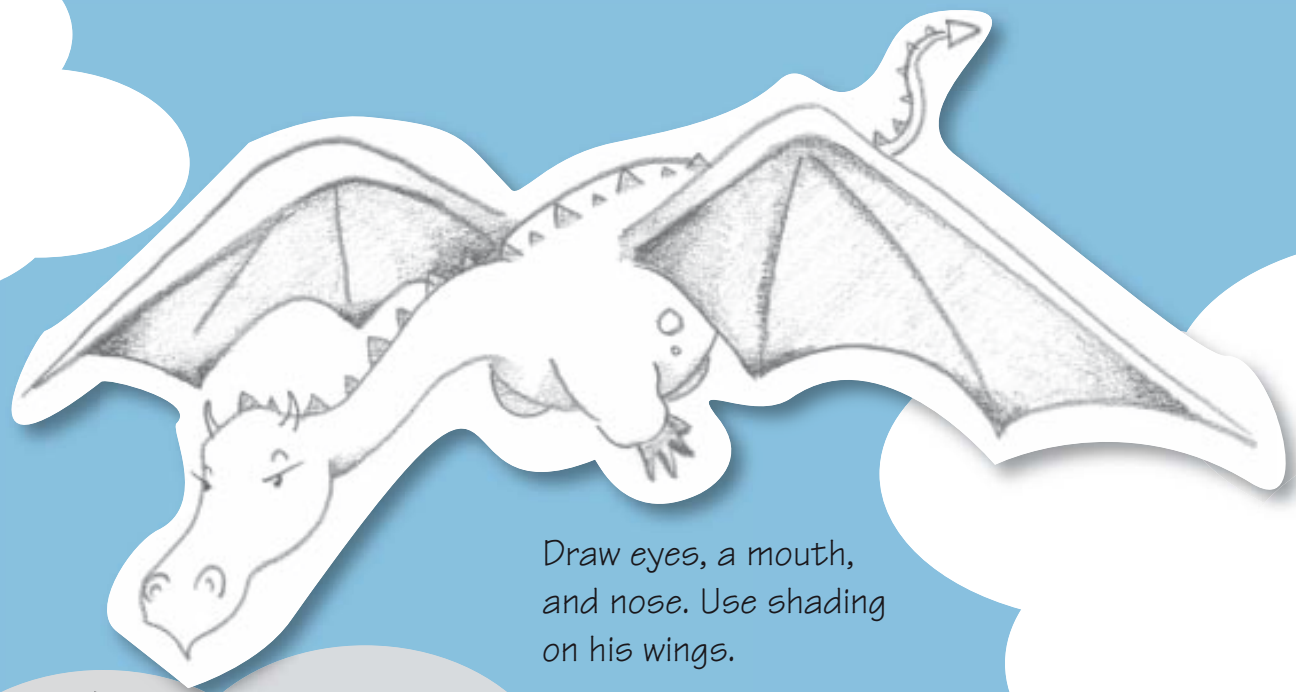
Begin with basic shapes and curved lines.



2

Draw around the shapes to make your dragon.



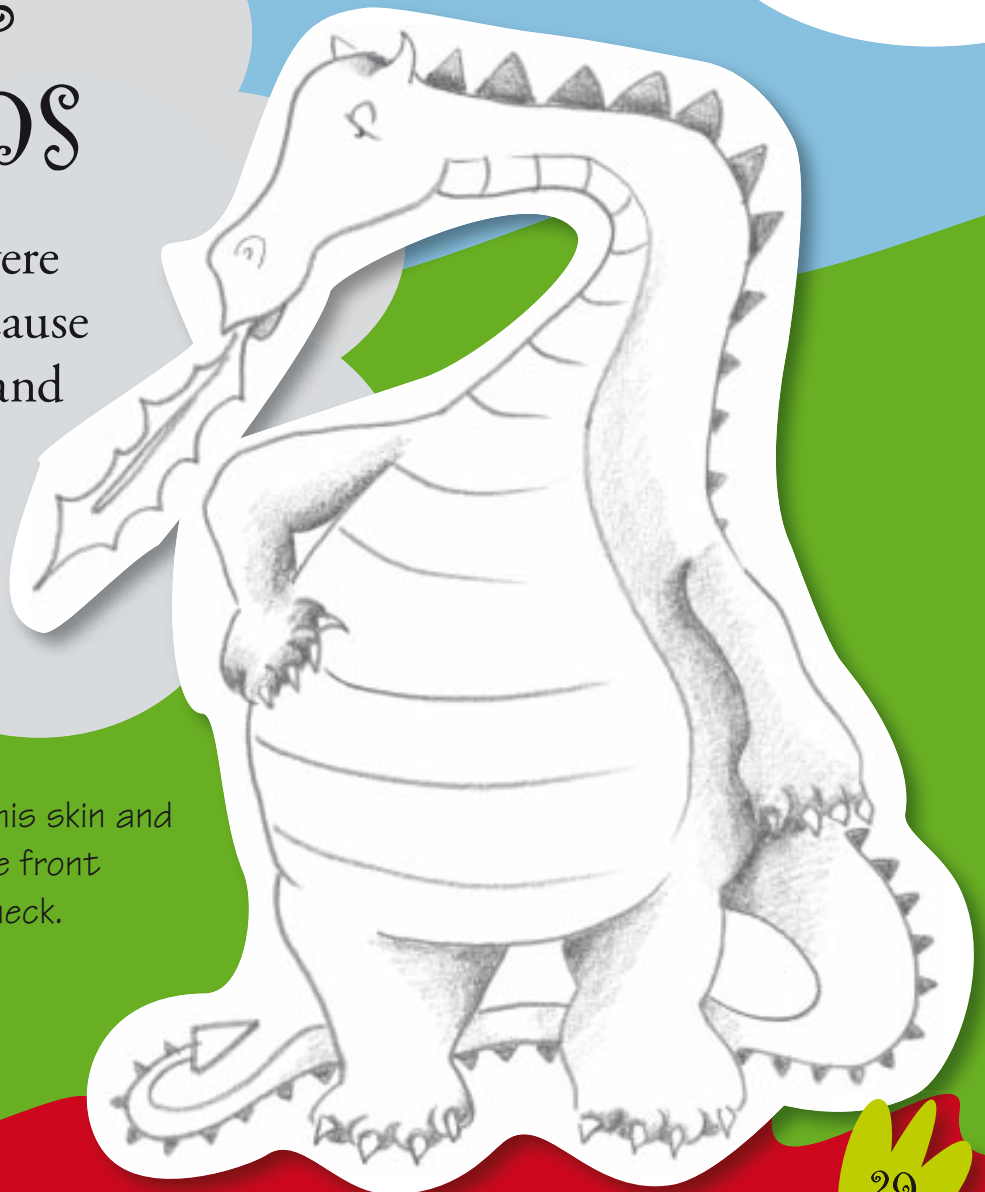


Draw eyes, a mouth, and nose. Use shading on his wings.

More dragons

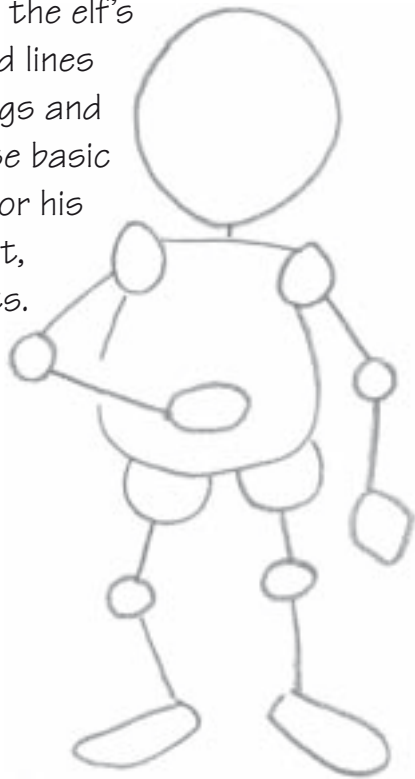
IN FAIRY TALES PEOPLE were terrified of dragons because they were thought to fly and breathe fire. Princes were sent off to kill dragons in order to protect people—and rescue princesses.

Use shading on his skin and draw lines on the front of his belly and neck.





Draw a large circle for the elf's head, and lines for his legs and arms. Use basic shapes for his body, feet, and joints.



Give your elf shorts and a T-shirt to wear. Draw an outline around his arms, hands, and legs.



Elf

ELVES ARE A TYPE OF FAIRY that are popular in myths. These tiny people are said to be friendly to humans, although sometimes they can misbehave! Santa Claus has elves working for him as his helpers.





Add in his eyes,
mouth, ears,
and nose. Draw a
hat and a bag.
Dress him in
striped tights
and shoes.



Use shading on
your elf's tights,
scarf, and bag.



Elf parade

HAVE FUN DRAWING THE ELVES ON THEIR PARADE. Do you think they are on their way to Santa's workshop?

Once you've drawn some elves try drawing lots of trees and snow!



Friendly elves



Bearded elf

Begin with basic shapes and lines, then give clothes, shoes, and bags to the elves.

Copy the shapes and lines in step 1. Draw an outline for the elf's body.



Draw me
a hat!

Friendly elf

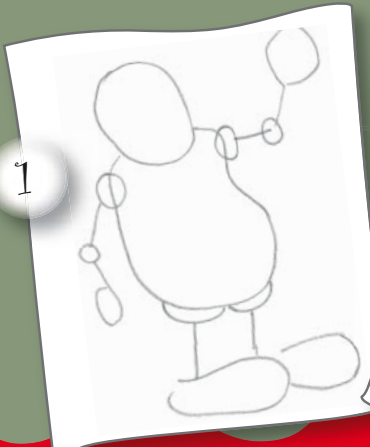


Use different colors and shading techniques to decorate your drawings.

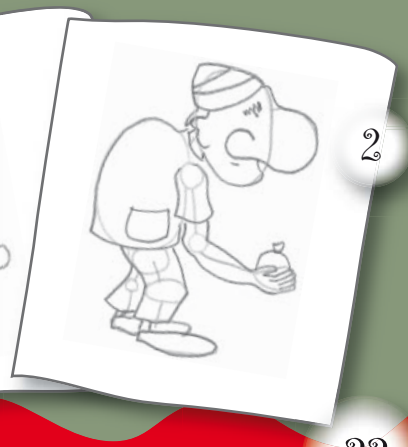
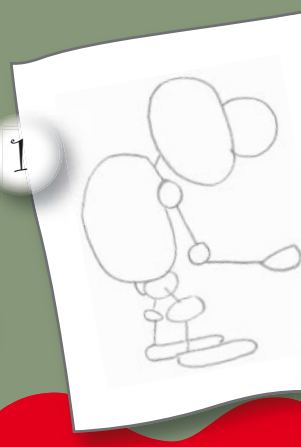


Helpful elf

Follow the circles and lines in step 1, then give your drawing more details.

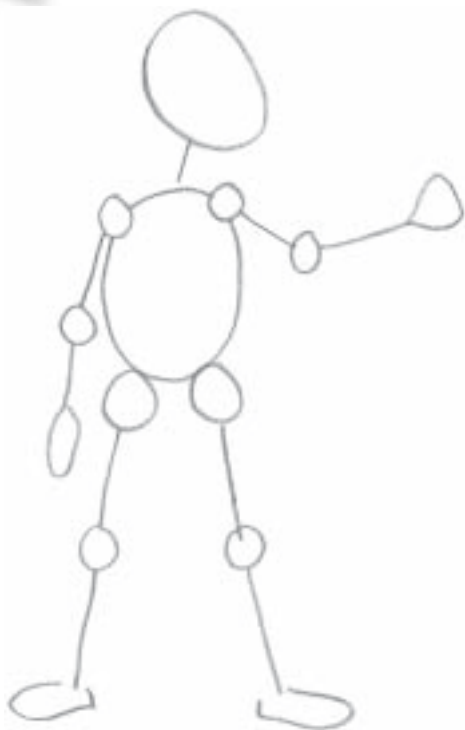


Start with shapes and lines, then give the elf a big nose, clothes, and an apple to hold.



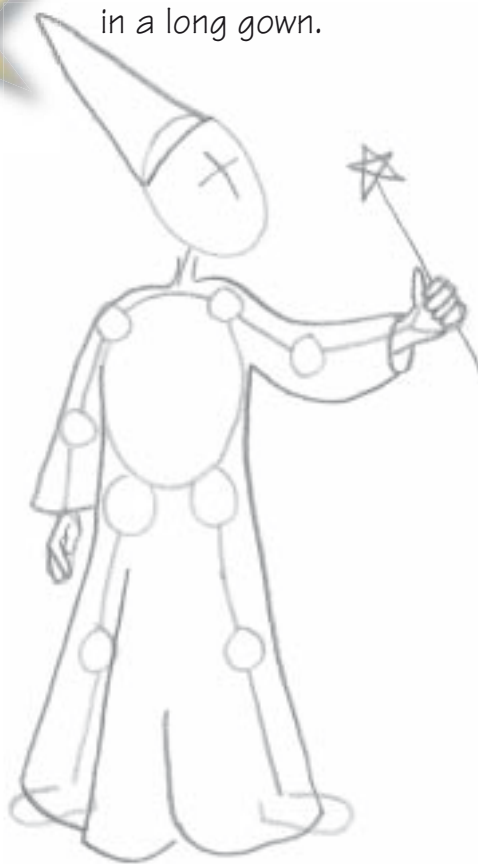
1

Start with basic shapes for the main parts of the wizard's body and lines for his legs, arms, and neck.



2

Draw a hat and a magical wand. Dress your wizard in a long gown.



Wizard

WATCH THE WIZARD as he waves his star-shaped wand to perform magical spells and tricks. He is powerful and his name means "wise man." The most famous wizard was named Merlin. Have you heard of him?

3
Give him some hair and a beard. Fill in his face with big eyebrows, a nose, and mouth.



Abracadabra

Decorate his gown with yellow stars and moons. Use shading on his hat and gown to make them look real.





Expressions

“MIRROR, MIRROR, ON THE WALL, who is the fairest of them all?” Try drawing different expressions on your magical creatures’ faces.



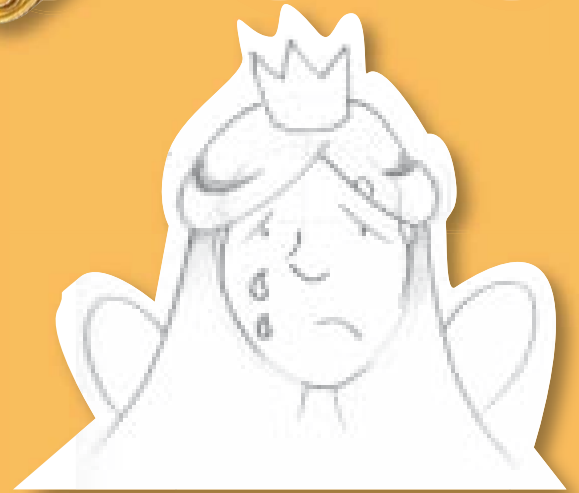
Sad fairy



Draw the fairy's head, neck, and eyes.

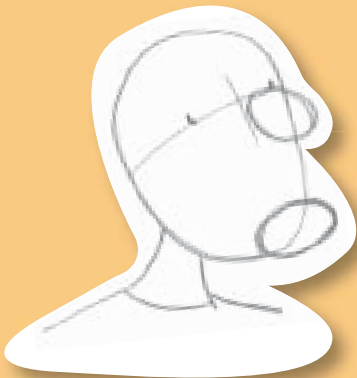


Add a nose, mouth, and teardrops.



Give her wings, hair, and a crown.

Happy witch



Draw the witch's head, neck, shoulders, and eyes.



Draw her nose with a wart, her hair, mouth, and chin.



Shade in her hair and draw a hat.

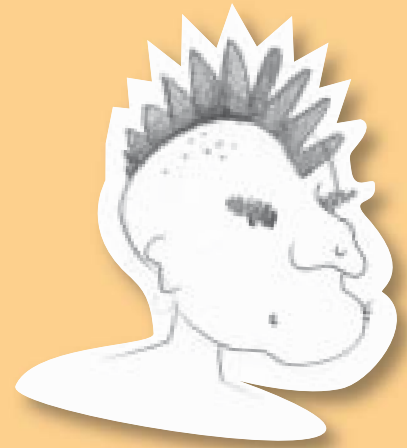
Angry goblin



Use two crossed lines to draw eyes in the right place.

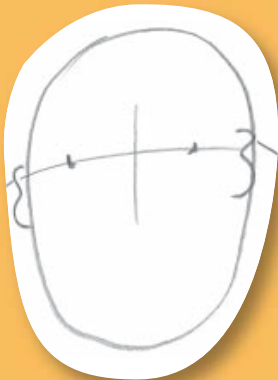


Draw his jawline, eyebrows, nose, and an ear.



Draw his hair and shade it in. Put stubble on his chin.

Tired giant



Draw the giant's head, eyes, and ears.

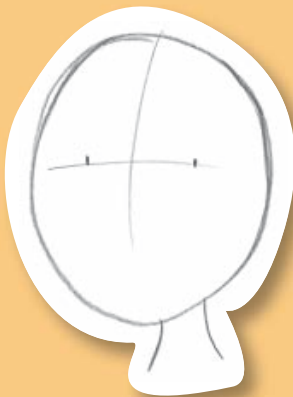


Put in detail on his face and give him shoulders.



Shade in his lips and hair.

Surprised elf



Start by drawing the elf's head, neck, and eyes.



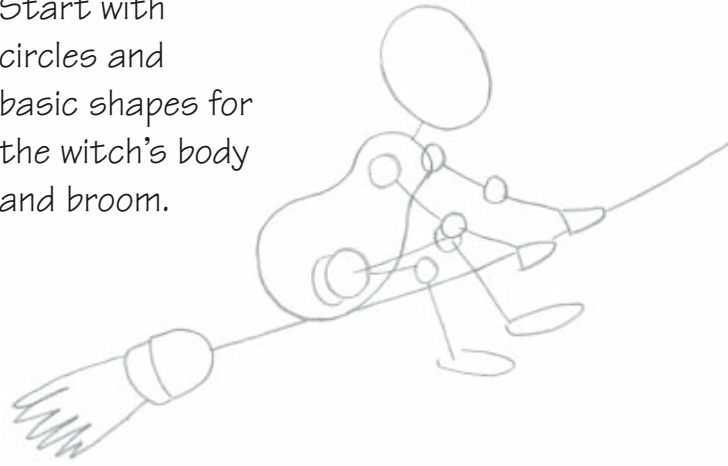
Add a nose, mouth, ears, and eyebrows.



Draw a hat and shade in his eyebrows and mouth.

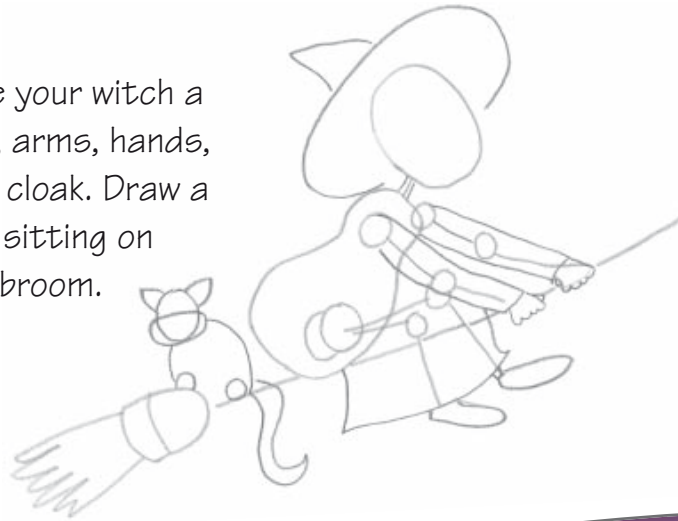
1

Start with circles and basic shapes for the witch's body and broom.



2

Give your witch a hat, arms, hands, and cloak. Draw a cat sitting on her broom.



3

Draw a nose, mouth, and eyes on the witch and her cat. Give the witch some hair.



cackle!
cackle!

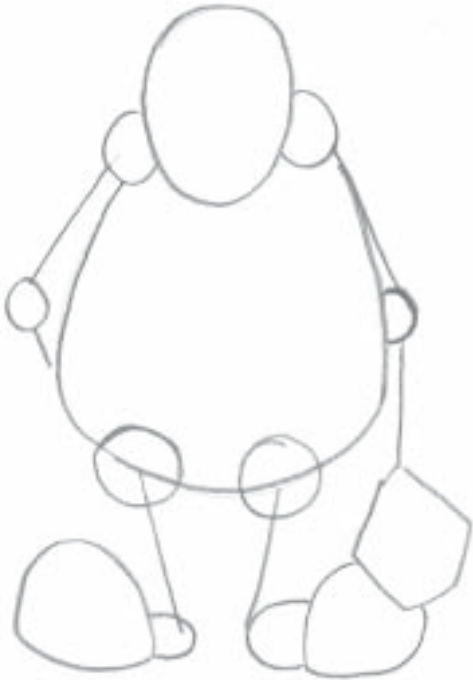
Witch

HUBBLE BUBBLE, HERE COMES
TROUBLE... watch out for the
flying witch and her cat. Stay
away from her cauldron!



1

Begin with basic lines and shapes for the giant's head, body, legs, and arms.



2

Draw around the shapes and lines to create the arms, body, fingers, and legs.



Giant

“**F**EE, FI, FO, FUM! I smell the blood of an Englishman. You had better stay away from my hen that lays solid-gold eggs, or I won't be a happy, friendly giant!”

3

Give the giant some hair, eyes, a nose, and mouth.
Draw his shoes and clothes.

fee,
fi, fo,
fum...

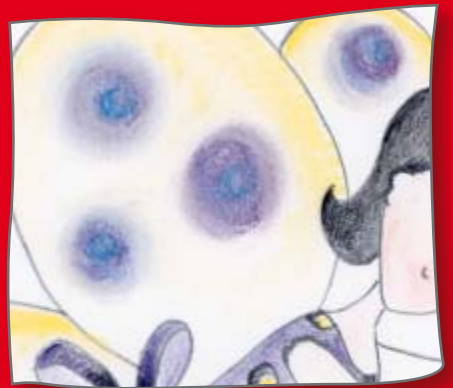


Texture



MAGICAL CREATURES have a range of textures, from feathery wings on fairies to shiny scales on dragons. Try out different materials to make your magical creatures look lifelike.

Wings need long, soft pencil strokes to make the feathers soft and light.



Use a soft pencil or pastel to make fairy wings look light and delicate.

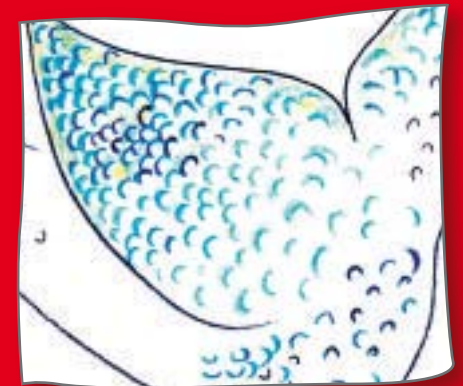
Words to think about

scaly furry bumpy

lumpy smooth slimy

hairy prickly spiky

feathery shiny



Mermaid tails and bodies have overlapping scales that have a texture like fish skin.



Textures in nature

Look around you (in your home, outside, and in books) to get ideas for adding more texture to your drawings. Can you guess where each texture is from?



Ssscales
are sssso
sssuper

This flowery texture would make a delicate fairy wing.



Look at these shimmering scales.



A unicorn could fly away with these feathers.



These lumps and bumps are like a witch's warty nose.



Dragons' wings can stretch like this.



Copy this texture to create a fairy's fluttery wings.



Could this be a dragon's scaly skin?



troll's
nose boil



runny nose



beak



Noses

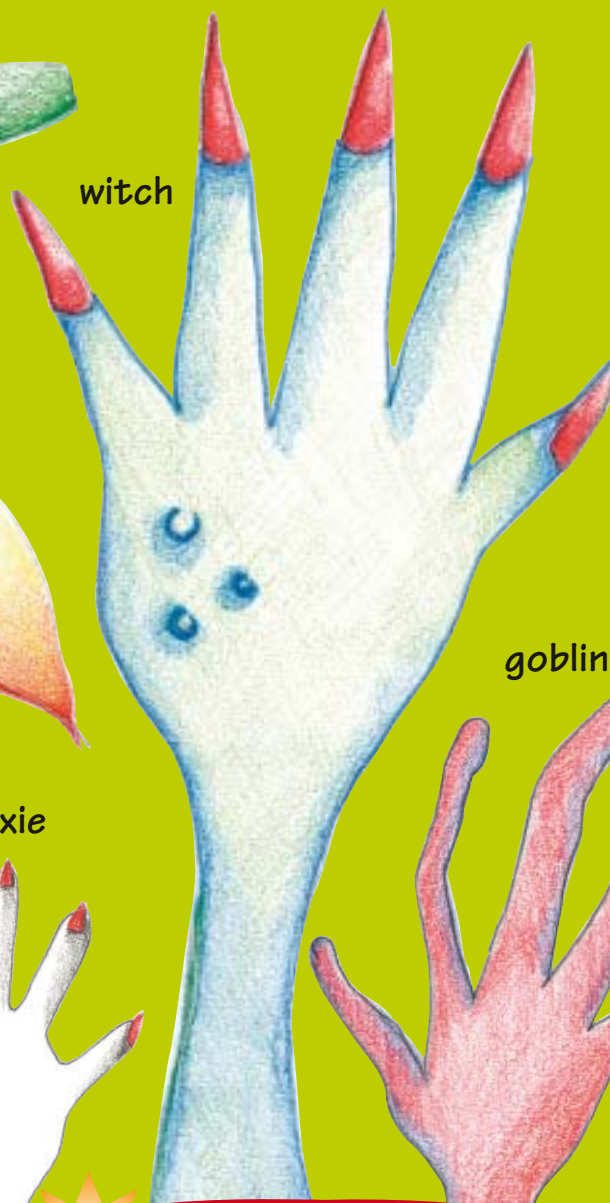
Be creative when drawing and coloring in noses on your magical creatures!

Body parts

MAGICAL CREATURES ARE ALL UNIQUE. Have fun drawing all their body parts! Once you have tried all the characters in this book use this page to give you more ideas.



monster



witch

Hands

Use shading around the witch's and giant's warts. Give the witch pointed fingernails and the princess pretty pink ones!



pixie



goblin



giant





troll

gnome

dragon

dragon

Wings

Draw wings with all kinds of textures and shapes.

Feet and claws

Use lots of different colors for the feet and claws on your magical creatures.



unicorn

Tails

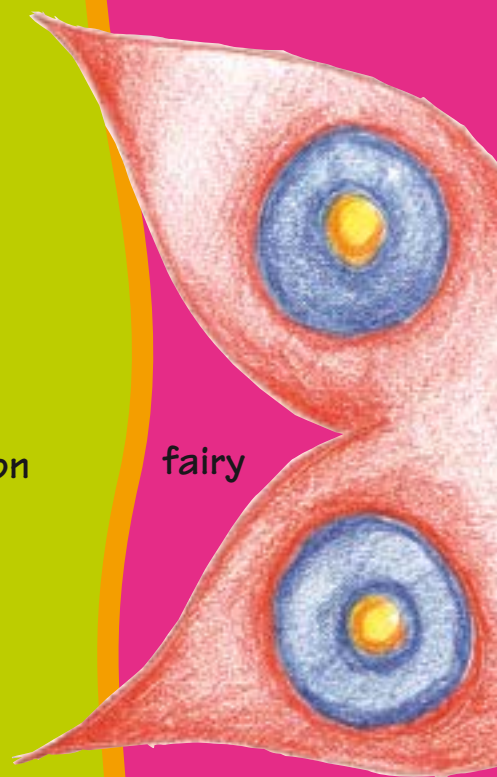
Magical creatures' tails are not at all alike. The mermaid's is slippery and scaly, the dinosaur's is spiked and sharp, and the unicorn's is wispy and wiry.



dragon



mermaid



fairy



unicorn



Scale

MAGICAL CREATURES are very different in size. There are tiny fairies and gigantic giants. Be creative and try drawing a few magical creatures on one page. Make sure you keep them to scale.

Tiny fairies

Fairies are usually very small. Have fun comparing your drawings to real-life objects to see the difference in size.



Silly sizes

You can play around by changing the scale of different creatures around to make some funny pictures. This giant isn't so big now that he's standing by an oversized elf!

Hmm... I think I prefer the frog



Life-size

Some magical creatures should be drawn to look life-size, such as the prince, princess, and unicorn.





Fly away

The witch looks like she is farther away because she is smaller than the flying dragon.

Any size

Some magical creatures come in many shapes and sizes. Dragons can be big and scary or small and sweet. Try drawing both!

Where's the beach?

Index

B
ballerina fairy 9

C
color 4, 5
crosshatching 23

D
dragon 26-27, 28-29,
45

E
elf 17, 30, 32-33, 37
expressions 36-37

F
fairy 6-7, 8-9, 10-11,
12-13, 17, 36, 45
fairy tales 29

G
giant 37, 40-41, 44
gnome 45
goblin 37, 44

H
hairstyles 13

M
mermaid 14-15, 17,
45
monster 44

P
pixie 44
prince 18, 20-21, 29
princess 18-19

S
shading 4, 7, 11, 13,
19, 2-23, 25, 27, 29,
33
stippling 23

T
texture 42-43
Tooth fairy 11
troll 44, 45

U
unicorn 25, 45

W
witch 16, 36, 38-39,
44
wizard 16, 34-35



It's magical.
Bye bye!

Acknowledgments

Dorling Kindersley would like to thank: Karen Hood, Tory Gordon-Harris, and Jane Bull for design inspiration; Rose Horridge and Claire Bowers for picture research; Zahavit Shalev and Fleur Star for editorial assistance.

Picture credits

Picture credits t = top b = bottom c = center l = left r = right

© Judith Miller / Dorling Kindersley / The Design Gallery 36tr.

I can draw



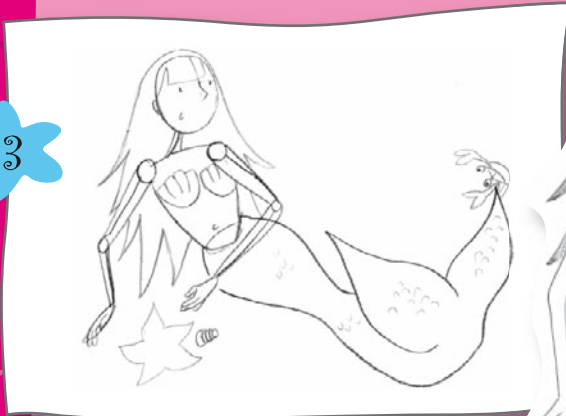
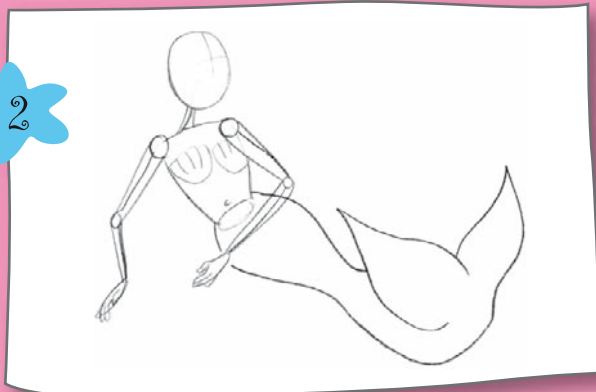
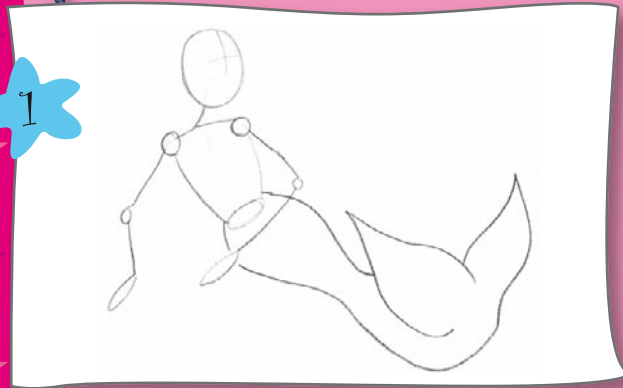
Magical Creatures

Find out how to draw all kinds of fantastic creatures with this step-by-step guide

Start with simple outlines to create your own amazing drawings

Get expert advice on tools and techniques, plus ideas and inspiration to make all your pictures unique and fun to draw

From monsters to unicorns, use colors and shading to bring your magical creatures to life!



\$7.99 USA
\$9.99 Canada



Discover more at
www.dk.com

ISBN 0-7566-1986-6



50799

9 780756 619862

Printed in Slovakia